

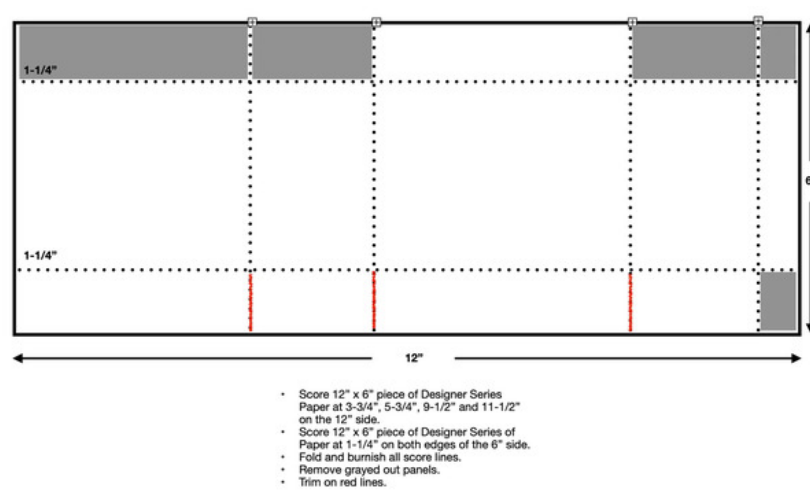
# Easy Treat Pouch project

LeeAnn Greff

701-720-4607

[lagreff60@gmail.com](mailto:lagreff60@gmail.com)

[shopwithLeeAnn.com](http://shopwithLeeAnn.com)



## Directions:

1. Cut your designer paper to 12" X 6". Score at 3 3/4", 5 3/4", 9 1/2" & 11 1/2"
2. Turn and score at 1 1/4" on the short side - on each side.
3. Cut up to the long score line on all scores as shown. Trim off the gray areas as shown on the template.
4. Fold up and adhere the ends together. Now fold into a box shape.
5. Adhere the bottom flaps together.
6. Pinch the open sides together to form a gusset; just at the upper third. Now the flap should fold over. Round the corners if desired.
7. For the belly band, cut a 10 1/2" X 1 1/4" strip of card stock or DSP. Start with the open end at the bottom and pinch to fold on all corners, leaving a bit of room for it to slide off. Adhere the ends together.
8. Decorate the front as desired.
9. This project was cased from Leslie Benson

# Easy Treat Pouch project

LeeAnn Greff

701-720-4607

[lagreff60@gmail.com](mailto:lagreff60@gmail.com)

[shopwithLeeAnn.com](http://shopwithLeeAnn.com)

- [Words Of Beauty Bundle \(English\) - 167090](#)  
Price: \$45.75
- [Made With Love 12" X 12" \(30.5 X 30.5 Cm\) Designer Series Paper - 167054](#)  
Price: \$12.50
- [Lovely & Beautiful 12" X 12" \(30.5 X 30.5 Cm\) Specialty Designer Series Paper - 166957](#)  
Price: \$16.50
- [1-3/4" \(4.4 Cm\) Circle Punch - 119850](#)  
Price: \$25.00
- [To The Point Label Punch - 164568](#)  
Price: \$25.00
- [Basic White 8-1/2" X 11" Cardstock - 166780](#)  
Price: \$14.00
- [Stampin' Dimensionals - 104430](#)  
Price: \$4.25
- [Real Red & White Baker's Twine - 164051](#)  
Price: \$5.00
- [Multipurpose Liquid Glue - 110755](#)  
Price: \$6.00

Add All to Cart